

Feeder Solutions



We keep your production running

Automation & Special feeders for specific applications

FOR SOME DEMANDS A STANDARD FEEDER IS JUST NOT ENOUGH. WITH OUR WIDE RANGE OF SPECIAL FEEDERS WE CAN REALISE A VARIETY OF DIFFERENT APPLICATIONS.



Our Feeder Brands:



Contents

QF Feeder <small>RELIABLE AND STURDY</small>	4
SA Feeder <small>THE ALL-ROUNDER</small>	5
Label Feeder <small>AUTOMATIC LABEL APPLICATION</small>	6 - 7
Label Feeder DS <small>WHEN IT GETS SPECIFIC</small>	8
Feeder for THT components <small>WITH X-INTERFACE</small>	9
AdoptSMT Radial Automation Feeder	10 - 11
AdoptSMT Axial Automation Feeder	12 - 13
AdoptSMT Multi Tube Feeder	14 - 15



Visit our homepage for exclusive offers,
news and product updates

www.adoptsmt.com

QF Feeder

RELIABLE AND STURDY

The QF series builds on proven and tested technology and stands out with its easy handling and capability. In addition the integration is very easy.

A tape width from 8 mm to 120 mm enables a wide area of different applications. The high torque drive unit is able to handle large component reels reliable.

Features:

- For 8 mm up to 120 mm paper and blister tapes
- Electronic pitch selection
- Bidirectional communication (Feeder ready)
- Adjustable advancement speed
- High torque drive unit
- Electronic pitch selection
- Reverse function
- On-board diagnostics
- Integrated reel holders optional up to 27" component reels
- Deep pocket
- 2 year warranty

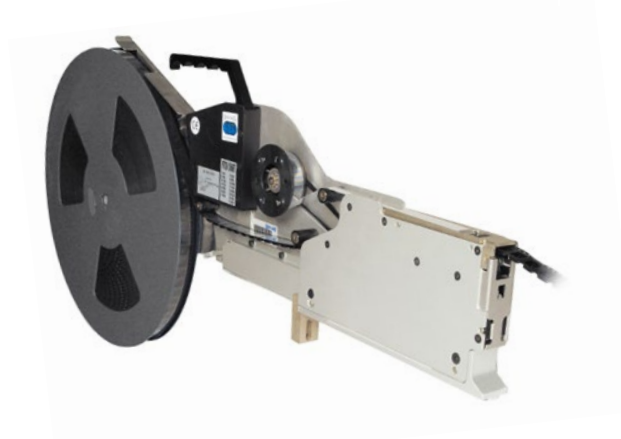
NEW:

The QF Feeder series is also available with adjustable advancement speed now.

Compatibility:

EIA-481 compliant materials

Tape Width:	Max. Reel Sizes	Max. Pocket Depth
8 mm	15"	4 mm
12 mm	15"	6,5 mm
16 mm	15" or 18"	19 mm
24 mm	15" or 18"	19 mm
32 mm	15" or 18"	19 mm
44 mm	15" or 18"	19 mm
56 mm	15" or 18"	19 mm
72 mm	18"	19 mm
88 mm	18"	19 mm
104 mm	18"	22 mm
120 mm	18"	22 mm



We are happy to support you with the feeder integration and provide CAD data if required.



SA Feeder

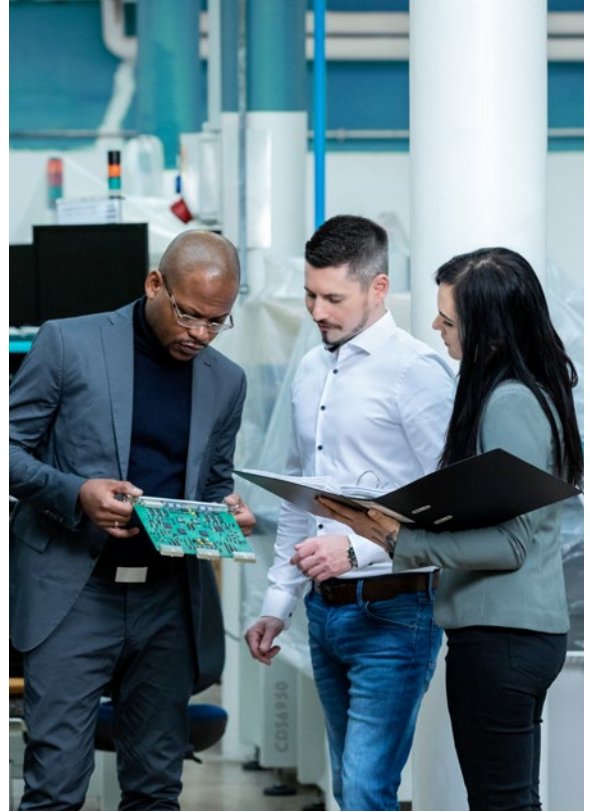
THE ALL-ROUNDER

The SA Feeder series is based on the well proved SSF Feeder which was successfully used on the Siplace S machines.

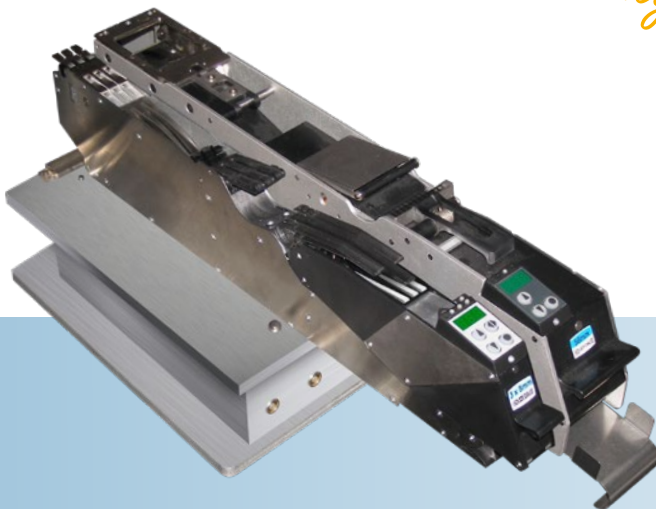
It's advantages can also be used in special machines now.

Features:

- For 8 mm up to 56 mm paper and blister tapes
- Open Source 8-bis ASCII code communication or simple PLC communication
- Bidirectional communication (Feeder ready)
- Optional slow speed index function to handle difficult component / tape combinations
- Electronic pitch selection
- Revers function
- Easy on board diagnosis due to 3-digit 7 segment display
- Sturdy design and low profile form factor
- Tape splicing compatible to be able to run the feeder non stop
- 2 year warranty



Low profile form factor for wide range of integration options



Label Feeder

AUTOMATIC LABEL APPLICATION

As a counterpart to the Axiom Media Presenter and in addition to the QF und SA Tape Feeder series we offer suitable Label Feeder with corresponding mechanical interface.



Features:

- Wide media spectrum from 3x3 – 58x50mm (WxL)
- Adjustable feed rate
- Feeder Ready signal to have the full control of the pick up sequence
- Simple electrical interface
- Easy operation
- Sturdy and reliable design
- 2 year warranty

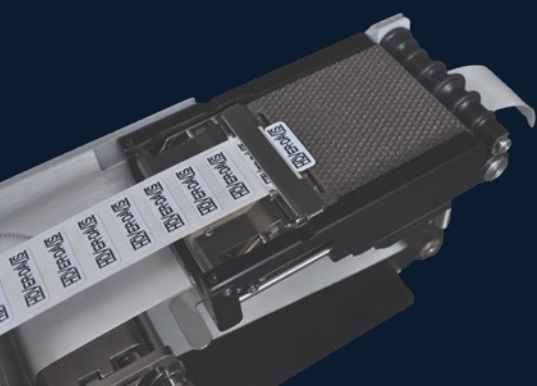
Your medium doesn't match the specifications? Don't worry our experts will gladly support you! In many cases some small changes on the feeder will run your application.

HOVER-DAVIS AXIUM FEEDER SPECIFICATIONS

Specifications	Models for 3-42 mm liner width		Models for 14-58 mm liner width	
	Minimum	Maximum	Minimum	Maximum
Media size	3x3 mm* (WxL)	42x50 mm (WxL)	3x3 mm* (WxL)	58x50 mm (WxL)
Media thickness (liner+label)	0.1 mm	0.4 mm	0.1 mm	0.4 mm
Liner width	3 mm	42 mm	14 mm	58 mm
Liner thickness	0.05 mm	0.08 mm**	0.05 mm	0.08 mm**
Feed rate	30 mm/sec	95 mm/Sec	30 mm/sec	95 mm/Sec

* Custom configurations to support media <3mm quoted upon application review.

** Media sample review by AdoptSMT suggested for liner thickness > 0.05mm.



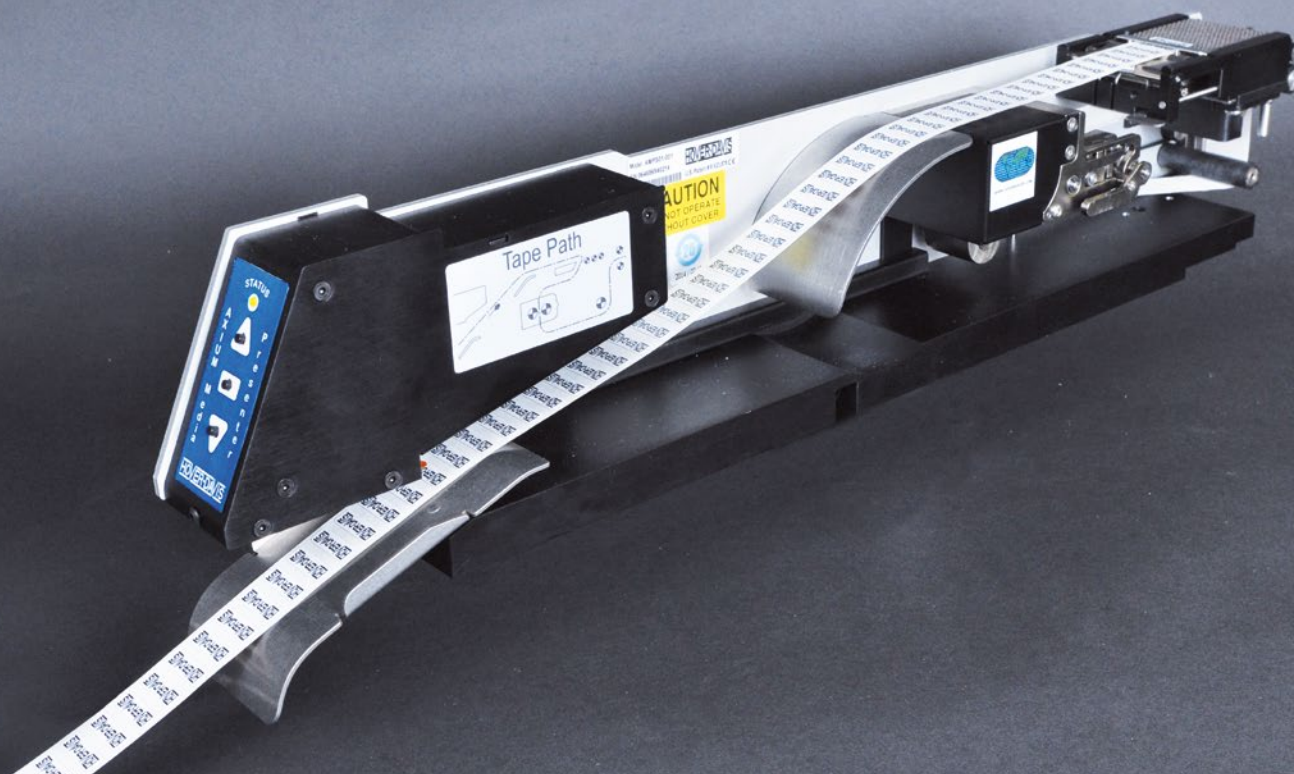
Visit our YouTube channel
and discover our latest videos:

Hover Davis Axiom Feeder running on SIPLACE X4



Label Feeder

AUTOMATIC LABEL APPLICATION



RECOMMENDED MEDIA

Property	Recommended		Not recommended	
Label size	□□□□	Min 3x3mm, max 42x50 mm (wide: 58x50 mm), w x l	□□□□	Less than 3x3 mm, more than 42x50 mm (wide: 58x50 mm)
Label format	□□□□	Rectangle, square, round	□□□□	Irregular Shapes (with and without cutouts), but talk to us.
Die cut	□□□□	No lift marks	□□□□	Prominent lift marks
Label opacity	□□□□	Opaque to semi-transparent	□□□□	Transparent media
Pitch	□□□□	Minimum 1 mm required	□□□□□□	Less than 1 mm
Single column	□□□□	Single column is ideal	□□□□□□	Multi-column
Label orientation	□□□□	Crosswise	□□□□	Lengthwise
Cover tape	□□□□	None	□□□□	Additional insulating tape not removable by presenter
Reel size	●	3 inches ID required	● ●	Other than 3 inches
Reel winding direction	●→	Overhand, media facing up (out)	●→	Underhand, media facing down (in)

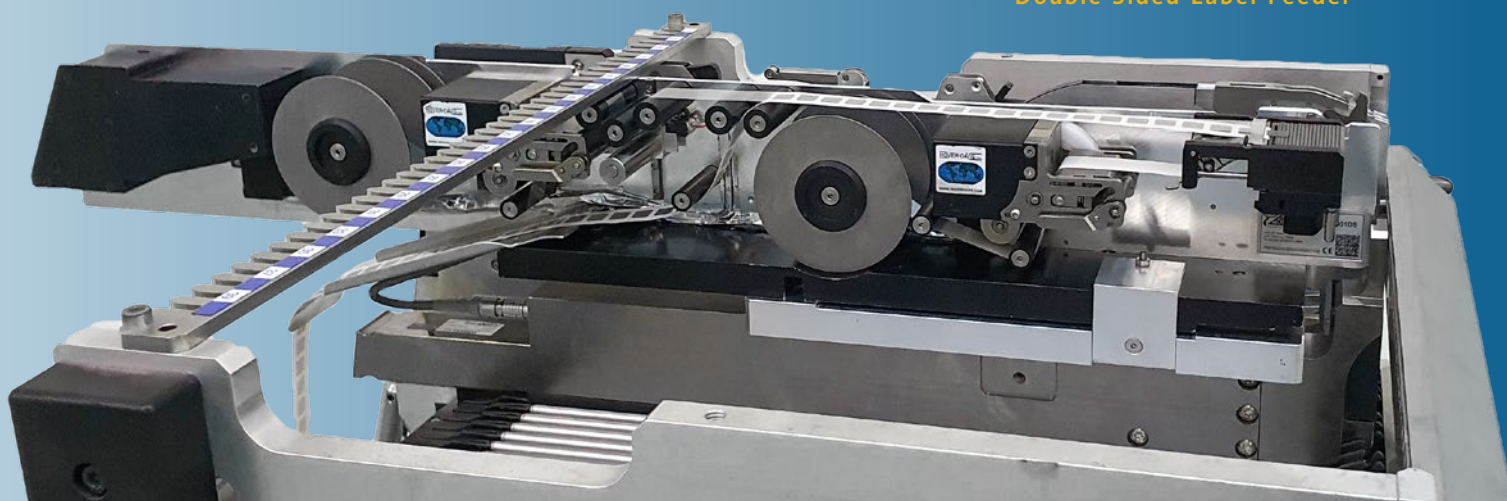
FIND MORE INFORMATION ABOUT LABELLING HERE: WWW.ADOPTSMT.COM/EN/LABELLING

Label Feeder DS

WHEN IT GETS SPECIFIC



Video:
Double Sided Label Feeder



Technical Details	
Art.No. Feeder	AD-AMPS02-001DS
Art.No. Generic Media Platform	HO-GMP02-001
Art.No. Adapter Plate Siplace	SI-00141310
Art.No. Adapter SIPLACE X	SI-00141305
Art.No. Adapter E by Siplace	SI-00288901
Min. / max. line width	5-42 mm
Min. / max. label size	5x5 mm - 42x35 mm
Feed rate	30 mm/s - 95 mm/s
Number of feeder slots	6
Size & weight	65,8x109x767 mm, ca. 4 kg

- Reliable Hover-Davis Design
- Simple user interface with push button control
- Automatic apply and peel
- Suitable for standard labels, double sided adhesive labels and media with cover tape
- Suitable for all Siplace S/F/HS/HF/D/X/SX/TX/E by models

Feeder for THT components

WITH X-INTERFACE

Our in house **development of THT feeders with Siplace X feeder interface** has led to a complete product line of AdoptSMT feeders. It includes:

- AdoptSMT Radial Automation Feeder
- AdoptSMT Axial Automation Feeder
- AdoptSMT Multi Tube Automation Feeder

AdoptSMT developed a process to **secure components with double-sided adhesive labels**. These kind of labels required a special feeding solution. Based on high reliable Hover Davis components, AdoptSMT developed a special label feeder for applications like this.

- AdoptSMT Label Feeder DS

Our feeder modules come with a **wide range of quality features** and can be integrated into any machine set-up.

This is what you can expect from our THT feeders:

- Proven quality
- Wide component range
- Compact designs
- Optional cutting and bending device
- Easy handling
- Short set-up times
- Compatible with SMD pick-and-place machines and special machines
- Conversion to other component sizes possible
- Solutions for radial, axial and components in tubes



Flexible and individual solutions become more and more important. Our THT Feeder series expands the level of automation in your production and creates capacity in other areas. We are happy to support you with new challenges.

All AdoptSMT THT Feeder are also available without Siplace X Interface in order to use this kind of special feeders in automation cells. We pay special attention to provide simple integration technology.

Our brand new **host feeder** enables the integration of any kind of feeders in Siplace X machines such as bowl feeders. The bidirectional communication between feeder and machine makes it possible to do a proper integration of critical applications as the machine knows all time the current feeder status.

Please contact us for an individual offer based on your required application.

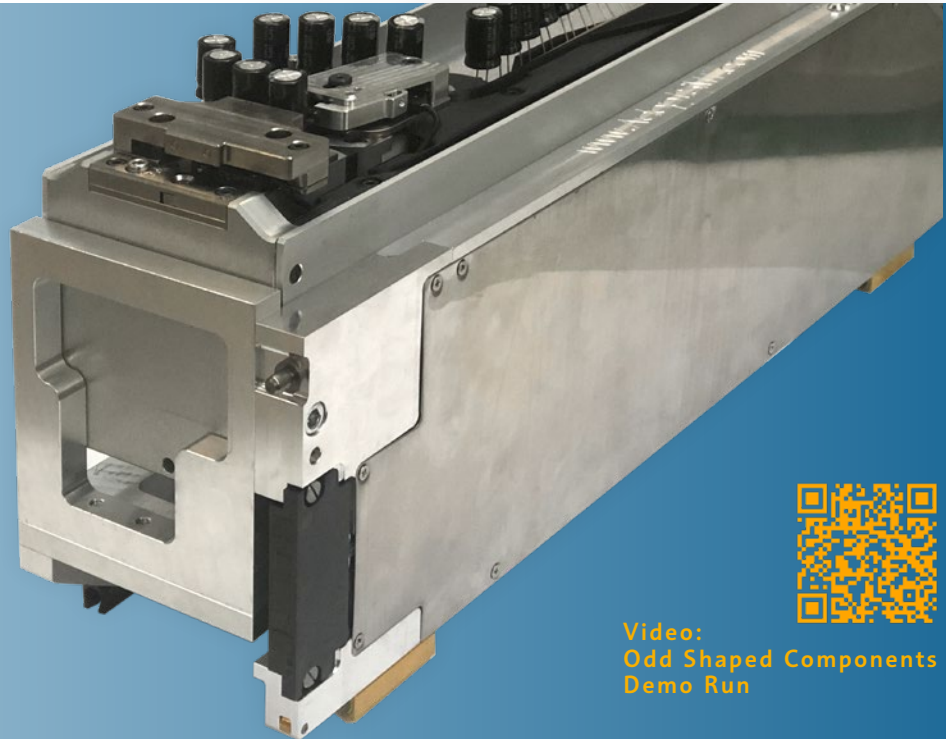


Find this and other YouTube video here:
Odd Shaped Components Feeder Portfolio

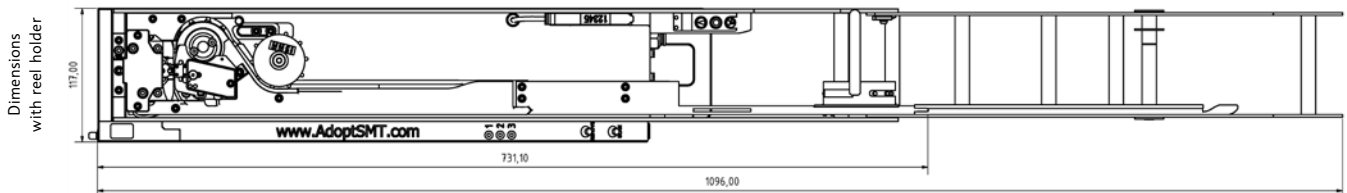
AdoptSMT Radial Automation Feeder

WITH SIPLACE X-INTERFACE

HOVER-DAVIS
The Feeder Company
INSIDE



Video:
Odd Shaped Components
Demo Run



AdoptSMT Radial Automation Feeder with Siplace X Interface

AdoptSMT has completed the integration of the Hover-Davis Radial Automation Feeder for the SIPLACE SX / X series and other placement machines with SIPLACE X Feeder Interface. The new feeder is compact, easy to integrate and easily retrofittable for other component sizes.

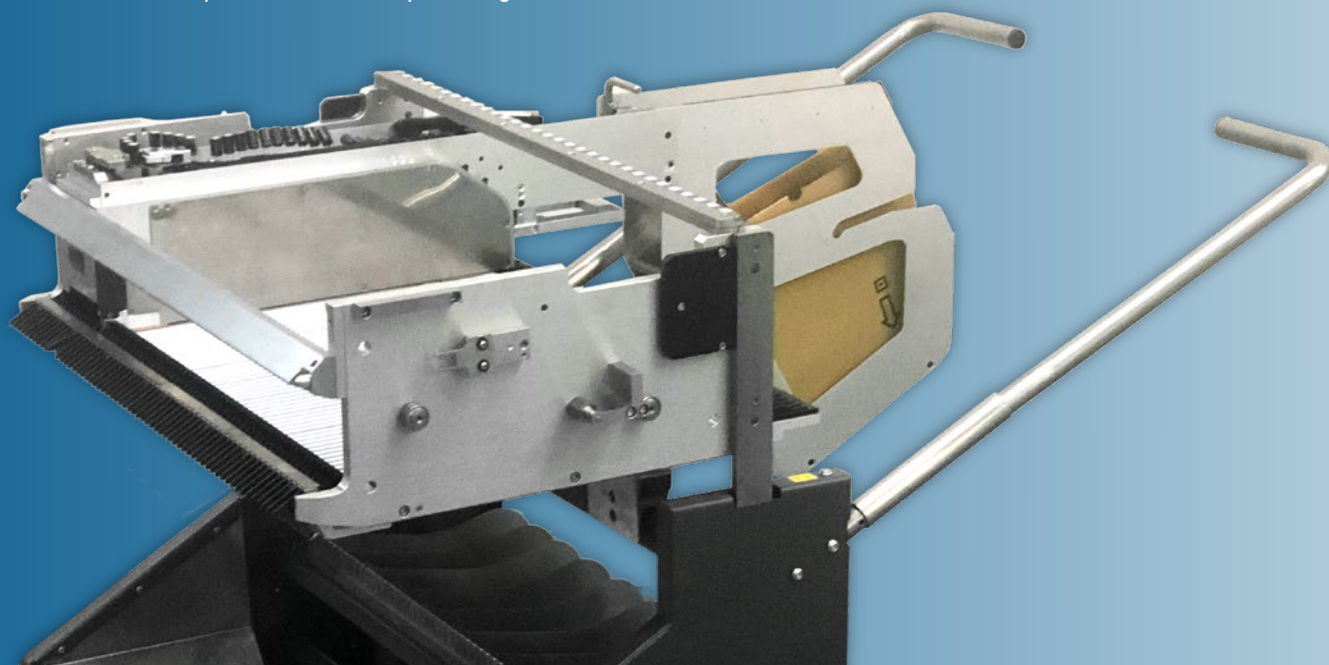
The feeder module offers these advantages:

- Compatible with all ASM Pick & Place machines with SIPLACE X feeder interface and software 7.08 or higher
- Compatible with passive clinch
- For radial components, capacitors, varistors, LEDs and many more (see technical details)
- Low investment costs
- Proven Hover Davis quality
- Compact design, only 10 feeder slots
- Easy to operate
- Short setup times (see video link above left)
- Provides tape splicing capability; empty tape detection
- Can be set up like a standard tape feeder on the feed table
- Wide range of components
- Easy and cost-effective modification to other part sizes in less than 10 minutes
- Includes removable reel holder for ammo pack or reel
- Integrated clamping and cutting device

AdoptSMT Radial Automation Feeder

WITH SIPLACE X-INTERFACE

On the feeder cart you can see the compact design.



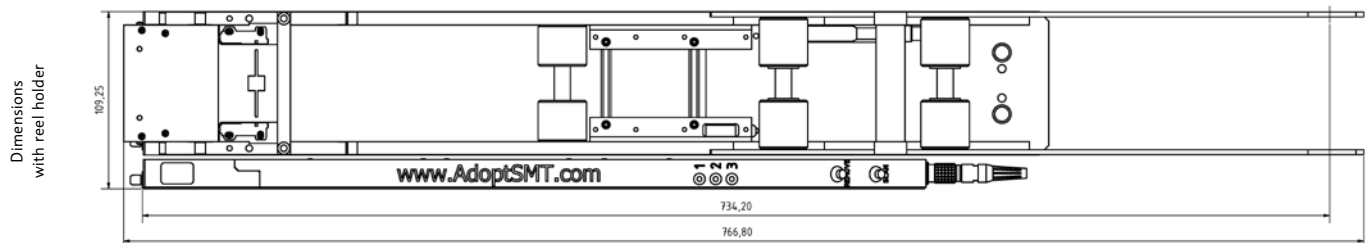
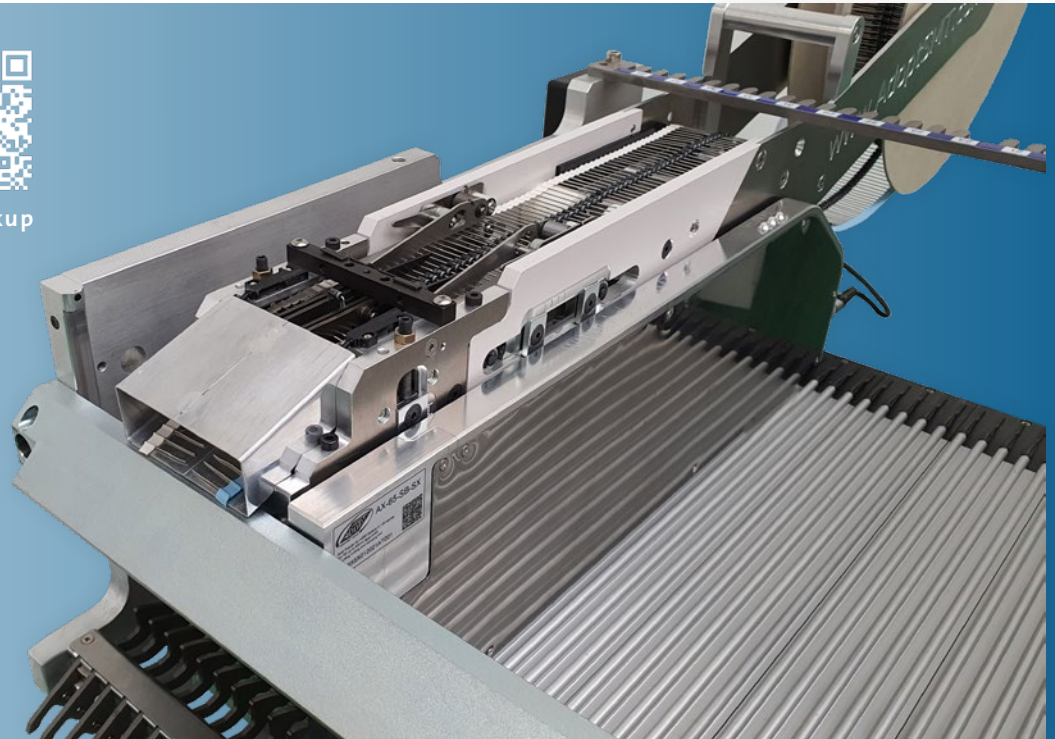
Technical Details		
Tape Pitch	12,7 mm	15,0 mm
Art. No.	AD-RA-12.7-SX	AD-RA-15.0-SX
Component Pitch	Single, Double und Triple Pitch (12.7 mm, 24.4 mm resp. 38.1 mm / 15.0, 30.0 resp. 45.0 mm)	
Maximum Component Height	50 mm (Feed hole to component top edge), 30 mm (Casing)	
Diameter (round components)	5 - 20 mm	
Maximum Size (rectangular components)	26.2 x 20 mm (width/thickness)	
Minimum component height	5 mm (with 20 mm nozzle)	
Feed Hole to bottom edge of component	12,5 bis 19,5 mm	
Lead Pitch	2,5 bis 22,5 mm	
Tape thickness	0,86 bis 2,0 mm	
Lead length after cutting	2,8 bis 13,0 mm	
Speed	200 ms / 18.000 cp/h	
Number of feeder slots	10 slots	
Maximum reel size / width	400 mm / 63,5 mm	
Maximum Ammo Box size	356x305 x 85 mm	
Size and weight: device, WxHxL	without reel holder:	117 x 170 x 740 mm, 11 kg
	with reel holder:	117 x 500 x 1096 mm, 12 kg

AdoptSMT Axial Automation Feeder

WITH SIPLACE X-INTERFACE



Video:
THT component pickup



AdoptSMT Axial Automation Feeder with Siplace X Interface

AdoptSMT has completed the integration of the Axial Automation Feeder for the Siplace SX/X series and other pick-and-place machines with a Siplace X feeder interface. The new feeder is compact, easy to integrate and easily retrofittable for other component sizes.

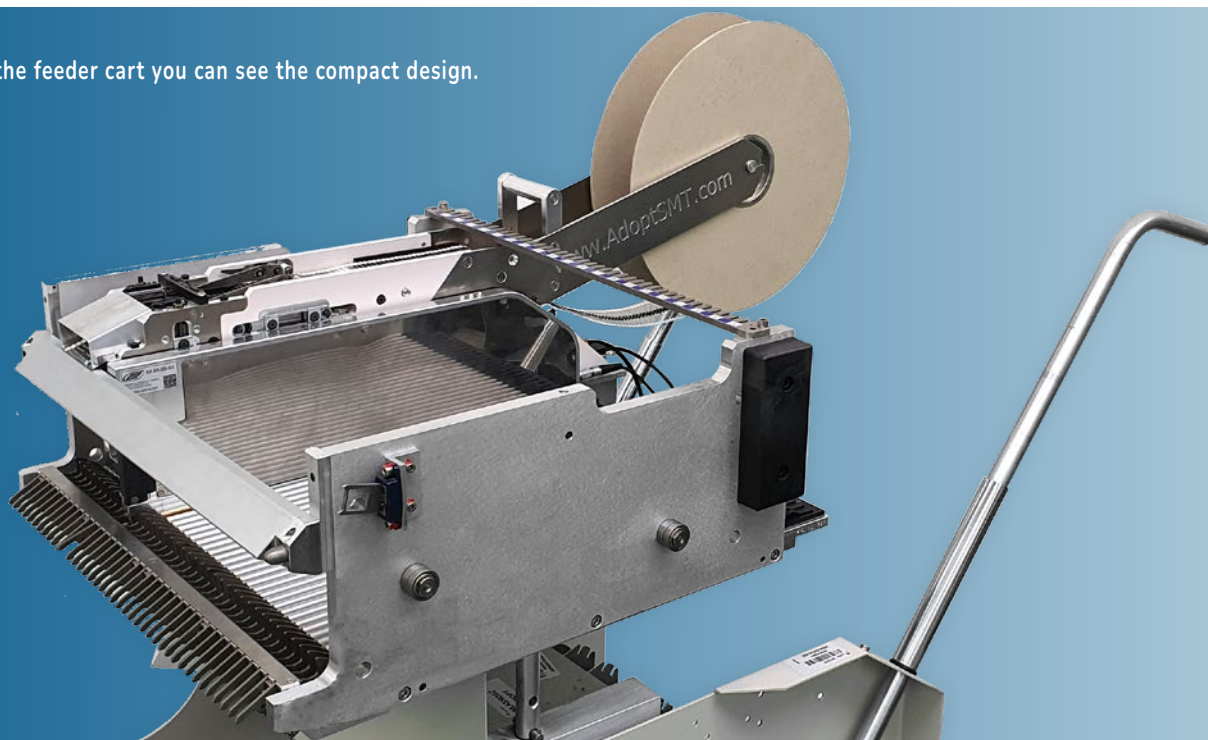
The feeder module offers these advantages:

- Compatible with all ASM pick-and-place machines with a Siplace X feeder interface and software version 7.08 or higher
- Compatible with passive clinch
- For axial components such as resistors, diodes, etc. (according to DIN IEC 60286)
- Low investment costs
- Proven quality, precise component alignment
- Compact design, only 10/14 feeder slots
- Easy to use
- Can be placed on the feeder table like a normal tape feeder
- Wide range of components
- Offers the possibility to splice tapes
- Empty belt detection
- Component sensor
- Simple and cost-effective conversion to other component sizes
- Integrated cutting and lead bending device
- Reel holder included
- Tape guide for the use of bobbin containers optionally available
- Reel brake optionally available
- Ammopack holder optionally available

AdoptSMT Axial Automation Feeder

WITH SIPLACE X-INTERFACE

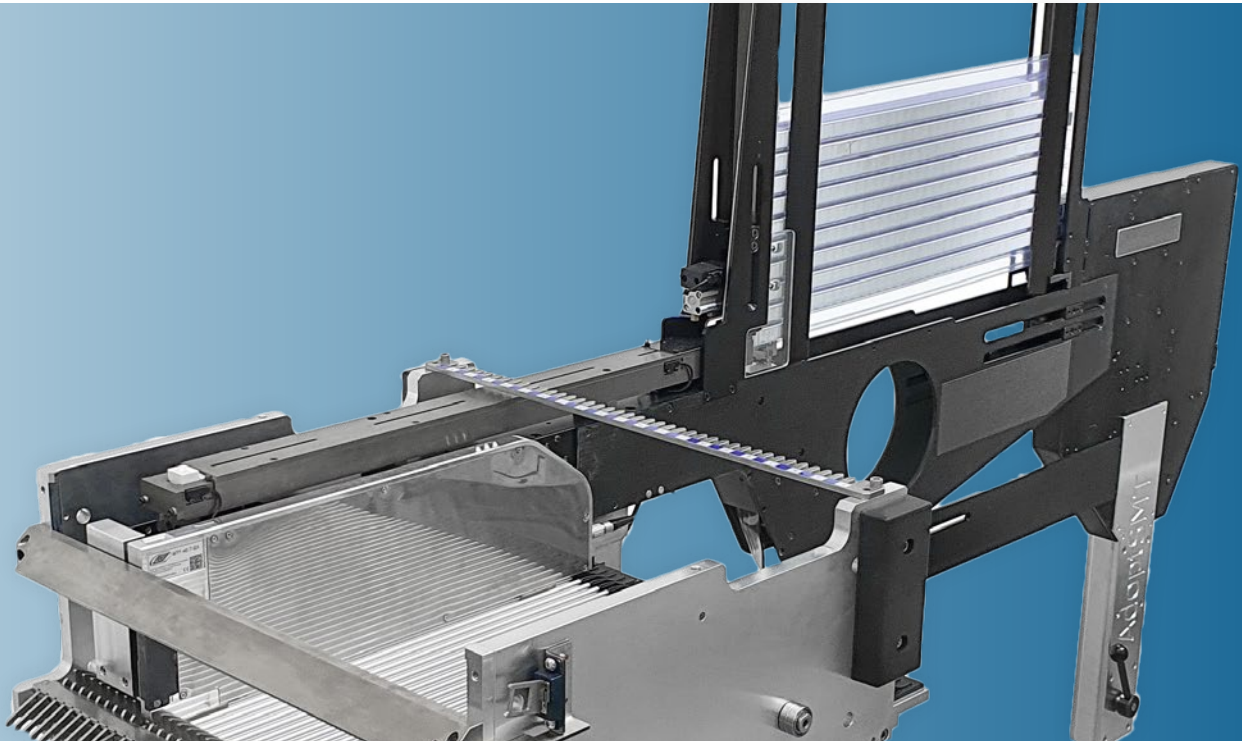
On the feeder cart you can see the compact design.



Technical Details		
Art. No. / Wire Diameter	AD-AX-065-SB-SX0406 AD-AX-065-SB-SX0608 AD-AX-065-SB-SX0810 AD-AX-065-SB-SX1012 AD-AX-065-SB-SX1214	AD-AX-105-SB-SX0406 AD-AX-105-SB-SX0608 AD-AX-105-SB-SX0810 AD-AX-105-SB-SX1012 AD-AX-105-SB-SX1214
Tape Width	55-65 mm	55-105 mm
Component Pitch	5 / 10 mm	5 / 10 / 15 / 20 mm
Maximum Component Length	4,1 - 20,0 mm	4,1 - 40,0 mm
Component diameter (round components)	0,6 - 9,0 mm	0,6 - 19,0 mm
Lead Pitch	7,5 - 22,5 mm	7,5 - 45,0 mm
Wire Diameter	0,4 - 1,4 mm	
Space from body	1,5 mm + half of wire diameter	
Speed	720 ms / bis zu 5.000 cp/h	
Number of feeder slots	10 slots	14 slots
Maximum reel size / width	400 mm	
Size and weight: device, WxHxL	with reel holder: 110 x 320 x 767 mm, 11 kg with tape guide: 110 x 320 x 662 mm, 12 kg	with reel holder: 150 x 320 x 767 mm, 12 kg with tape guide: 150 x 320 x 662 mm, 13 kg

AdoptSMT Multi Tube Feeder

WITH SIPLACE X-INTERFACE



Dimensions
with reel holder



AdoptSMT Multi Tube Automation Feeder with Siplace X Interface

AdoptSMT has completed the development of its Multi Tube Feeder with SIPLACE X interface.



The feeder module offers these advantages:

- Compatible with all ASM pick-and-place machines with Siplace X feeder interface and software version 7.08 or higher
- Compatible with passive clinch
- Proven Hover Davis quality
- Easy and cost-effective changeover to other part sizes within the range
- Rearside tube loading allows fill up without stopping the pick and place machine
- Wide range of components



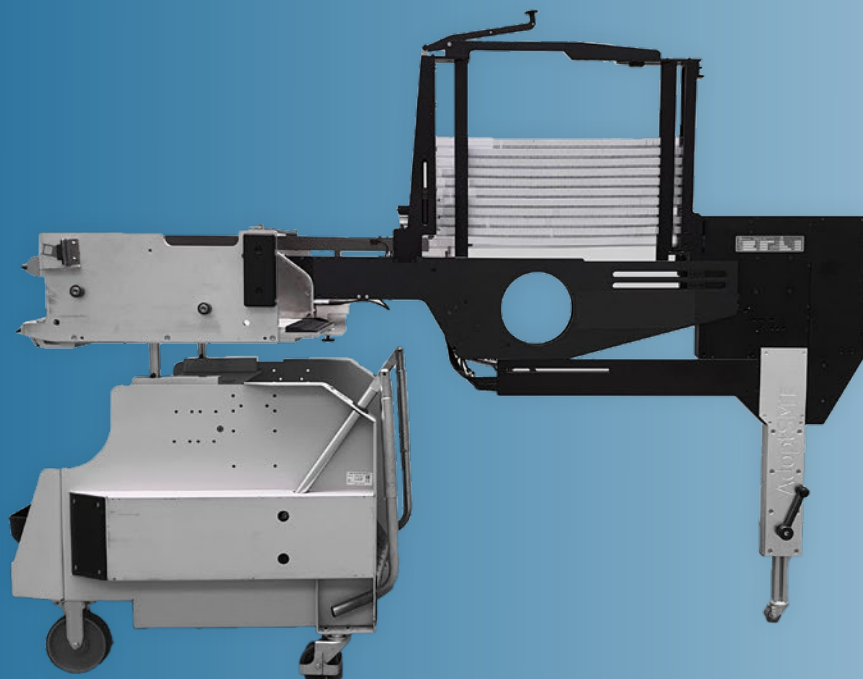
Interested?

Visit us on LinkedIn

and stay up to date with our product updates and news.

AdoptSMT Multi Tube Feeder

WITH SIPLACE X-INTERFACE



Technical Details	
Art No.	AD-MTF-45.7
No. of Feeder Slots	7
Tube Length	406 - 610 mm
Tube Width	5,3 - 45,7 mm
Tube Height	6,4 - 57,1 mm
Speed	depending on application
Tube Change Time	14 s
Max. Tube Stack Height	385 mm
Dimensions & weight	77,6 x 1776,5mm x 1245 - 1445 mm, 30 kg

LOCATIONS

We are here for you internationally

AdoptSMT Europe HQ Austria

Untersbergstrasse 1
5082 - Grödig near Salzburg
T: +43 6246 724 400
info@adoptsmt.com

Austria | Germany | Poland | United Kingdom | France | Swiss

adoptsmt.com