

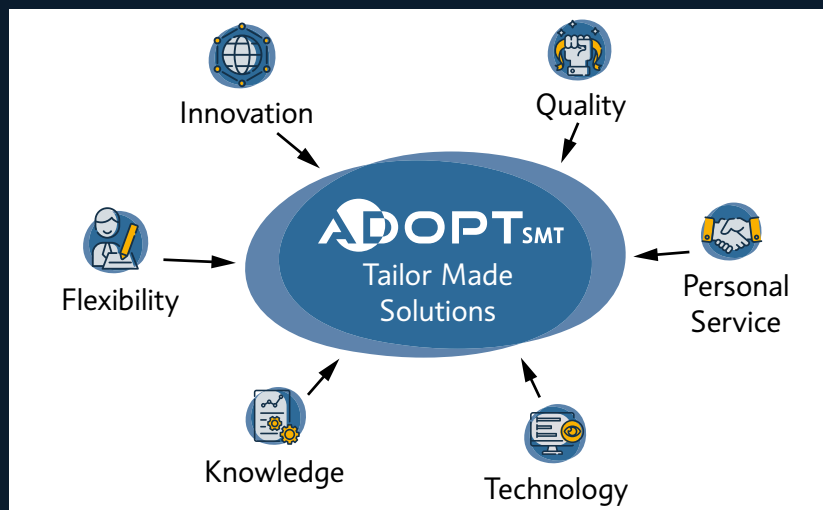
Identification

Labels · Printing · Auto-apply · Masking products

We keep your production running

SMT labels for all your needs

ADOPTSMT CAN SUPPLY YOU WITH LABEL PRINTERS, SOFTWARE AND ACCESSORIES FOR CUSTOM LABELLING AND IDENTIFICATION OF PRINTED CIRCUIT BOARDS.



Clear labelling and full traceability of product groups and components are essential, especially in the electronics and automotive industries and for labelling medical products and aerospace technology. Stringent production demands can only be met by using high-quality technological materials and complete solutions.

We and our partners have the know-how and market knowledge to develop the perfect combinations of consumables, hardware and software and create reliable solutions.



Contents

<u>Identification of circuit boards</u>	
<u>and electronic components</u>	4
<u>Masking solutions</u>	5
<u>Product identification</u>	
<u>and safety labels</u>	6
<u>Other identification solutions</u>	7
<u>Other information</u>	8
<u>Printing systems</u>	9 - 10
<u>Semi-automatic dispensers</u>	11
<u>Automatic label applications</u>	12
<u>Hover-Davis Axium Ramp</u>	13
<u>Axium media presenter for 3-42 mm liners</u>	14 - 16
<u>Axium media presenter for 14-58 mm liners</u>	16 - 17
<u>Software</u>	18



Visit our homepage for exclusive offers,
news and product updates

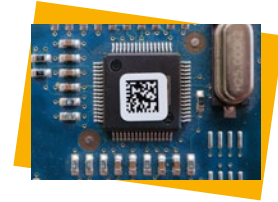
www.adoptsmt.com

Identification of circuit boards and electronic components

Almost every industry – from the automotive branch to aerospace and the medical technology sector – demands full traceability and documentation of every single production step when manufacturing circuit boards for their purposes.

Working with CCL-Design, who are the largest manufacturer of high-quality technical identification products in the world, we produce traceability solutions for all requirements of the SMT process.

High-temperature labels are ideal for the following processes (see table). We have the perfect solution for almost any process with more than 20 different materials, a wide variety of different colour ribbons, over 2000 formats and 25 colours. Choose between blank labels combined with suitable hardware/software and custom pre-printed labels. Batch sizes start from just 1 roll.



Material	Wave soldering	Cleaning before reflow	Vapour phase soldering	UL* -certified	Auto-apply	Manual-apply
988/987: Standard material Suitable for most SMT processes. Colour: glossy white Thickness: 2 mil	With colour ribbon 104	With colour ribbon 318		(103, 104, 122, 140, 318)	Yes	Yes
596/597: Alternative material Recommended for more aggressive processes. Colour: matt white Thickness: 2 mil	With colour ribbon 104	With colour ribbon 104		(103, 104, 140 and others)	Yes	Yes
482/487: High-performance material Extremely resistant against abrasion and chemicals. Suitable for vapour phase soldering. Colour: matt white Thickness: 2 mil	With colour ribbon 104	With colour ribbon 104	With colour ribbon 104	(103, 140)	Yes	Yes
670/680: The all-rounder Found in all applications requiring extremely high contrast on the smallest labels. Suitable for most processes.	With colour ribbon 104	With colour ribbon 104	With colour ribbon 104	(103, 104, 140 and others)	Yes	Yes
375/376: Low-cost alternative 1 mil standard material for reflow soldering processes. Compatible with auto-apply in many cases. Suitable for chemical cleaning processes.	With colour ribbon 104/318	With colour ribbon 104/318		(103, 104, 318)	Yes**	Yes
720: ESD-safe material Higher resistance to temperatures and chemicals than the standard material ESD-safe acc. to EIA 625, EIA 541	With colour ribbon 104	With colour ribbon 104				

* In combination with this label material and UL-certified ribbon. The material numbers are listed in parentheses.

** We advise first testing auto-apply compatibility.

Masking solutions

High-temperature, masking and protective labels and tapes are suitable for temperatures up to 300°C. Auto-apply or manual-apply solutions. Tapes, dots, special formats and specialist applications with non-adhesive zones or tabs for easy removal of protective labels.

Double-sided adhesive dots available on request as assembly and positioning aids.

Masking material (AKA Kapton)	Tape width in mm	Dot diameter in mm	Special formats	Manual-apply	Auto-apply**	Other
950: 1 mil polyimide with silicone adhesive	6, 8, 9, 10, 12, 14, 15, 19, 25, 38	4, 5, 6.35, 7, 8, 9, 10, 12, 16, 19	Yes	Yes	No	Tape and label dispenser*
948: 1 mil polyimide with silicone adhesive, ESD-safe	6, 8, 9, 10, 12, 14, 15, 19, 25, 38	4, 5, 6.35, 7, 8, 9, 10, 12, 16, 19	Yes	Yes	No	Tape and label dispenser*
951: 2 mil polyimide with silicone adhesive	6, 8, 9, 10, 12, 14, 15, 19, 25, 38	4, 5, 6.35, 7, 8, 9, 10, 12, 16, 19	Yes	Yes	No	Tape and label dispenser*
895: 2 mil polyimide with silicone adhesive	n.a. or on request	On request	Yes	Yes	Yes	Tape and label dispenser*
949: 5 mil polyimide with silicone adhesive	n.a. or on request	4, 5, 6, 7, 8, 9, 10, 12, 13, 16	Yes	Yes	Yes	Tape and label dispenser*
052***: 2 mil polyimide Material, double-sided adhesive with two liners	n.a. or on request	n.a. or on request	5 x 5, 8 x 8, 10 x 10 mm	No	Yes	

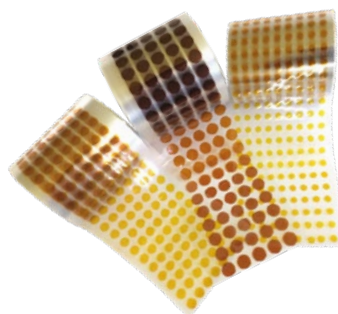
* Tape and label dispensers, see page 11.

** We advise first testing auto-apply compatibility. For feeders, see page 12.

*** Special feeders and dispensers available on request.

Silicone protective and insulating caps

- Temperature-resistant up to 375 °C
- Reusable, do not melt, do not harden
- Mould flexibly to irregular shapes
- 2 mm – 53 mm outer diameter
- 0.5 – 50.8 mm inner diameter
- Range of colours and lengths



Product identification and safety labels

Rating information on electrical appliances must be easily identifiable. **Identification labels** have to withstand the toughest conditions and remain perfectly usable even if they come into contact with dirt, lubricants and fuels. Effective labelling lets users identify essential data, such as serial numbers, model numbers, year of manufacture, loading date, voltage and operating instructions.

Safety labels protect valuable goods and inventory

They are suitable for use as identification labels, seal stickers, proof of origin, product seals, closure seals, warranty and maintenance seals, letter and parcel seals and much more.

Material	Properties and applications
463, 465, 466 durable, transparent, white and metallised (silver) Polyester	Matt transparent (463), white (465) or silver (466) polyester with extremely durable print using CCLs 213 thermal transfer ribbon. The print is resistant to many solvents and to abrasion and outdoor conditions. The labels have a permanent acrylic adhesive. Applications: underhood, automotive, aerospace.
585, 635 Glossy white polyester	2 mil high-gloss; white polyester film suitable for thermal transfer printing. Coated with 1.8 mil universal permanent acrylic adhesive for high adhesion *UL-approved. Applications: product identification inside and out.
518, 519, 693, 694 white and metallised polyester	2.0 mil glossy white or metallised polyester film, printable with thermal transfer print, UL-approved. Applications: product identification inside and out (UV, extreme weather, salt water).
439 tamper-evident, self-destroying, semi-gloss white material	The white PVC material provides unmistakable evidence of tampering and is highly durable on a variety of surfaces. It is extremely resistant to moisture and chemical cleaning agents. The labels can only be removed in tiny pieces and are not reusable.
448, 445, 771 clear, matt and glossy void polyester	Safety labels that leave the word VOID on the surface of the product and the label adhesive surface if an attempt is made to remove them. This shows that an attempt has been made to remove the label. Suitable for thermal transfer printing. Application: warranty/maintenance and sealing label.
643; 642 Laser material	Suitable for interior and exterior applications. Resistance to scratches, chemicals and moisture. The double layer of highly cross-linked PU/acrylic can be marked and cut by lasers. Tamper-proof as it is very difficult to peel from most surfaces in one piece after bonding.



Other identification solutions



LABELLING REUSABLE PACKAGING



Reusable transport packaging has to be relabelled with up-to-date information on a regular basis. This means that classic labelling systems have major drawbacks:

- Multiple layers of labels or remnants of old labels can cause **scanning errors**.
- **Cleaning** off old labels is very difficult.
- The **appearance** of transport packaging does not come up to the company's quality standards



PRODUCT RANGE

Rectangular Label Base Labels, basic material: 4106 1200 - PP60 glossy white, pre-printed in colour: monochrome grey (Pantone Cool Grey 3C) with "Place label here!" printed in German, English, French and Italian.

Lamination: transparent PET with special coating. Delivered on rolls with 76 mm (3") core.

The label only achieves its final bond strength on the surface after 24 hours.

The LABEL BASE LABEL

The Label Base Label is the perfect solution. As an added bonus, there is no need to modify your existing labelling system:

- **Relabel any number of times:** remove labels easily, **quickly** and without residue. Apply new labels securely and as often as required.
- **Uniform presentation:** the Label Base Label indicates where labels must be positioned.
- **Custom design:** the Label Base Label can be custom preprinted with your logo, address etc. as well as indicating the application position.
- **Self-adhesive:** the Label Base Label is self-adhesive. Different adhesives are available for different surfaces including low energy plastics.
- Withstands **washing processes**.
- **Sizes:** standard sizes from DIN A8 to DIN A4. Custom sizes and formats are available on request.
- **Your benefits:** no difficult cleaning, no scanning errors, high-quality presentation, no changes required to your current labelling system.

Suitable for your labels up to a size of	Label Base Label format	Article number	Labels per roll	Minimum purchase
74 x 53 mm (DIN A8)	80 x 60 mm	CC-LBG08985a1P	1000	1 roll
105 x 53 mm	110 x 60 mm	CC-LBG08986a1P	1000	1 roll
105 x 74 mm (DIN A7)	120 x 80 mm	CC-LBG08987a1P	1000	1 roll
148 x 74 mm	160 x 80 mm	CC-LBG08988a1P	1000	1 roll
148 x 105 mm (DIN A6)	160 x 120 mm	CC-LBG09217a0.5P	500	1 roll
210 x 75 mm	220 x 80 mm	CC-LBG09218a0.5P	500	1 roll
210 x 148 mm (DIN A5)	220 x 160 mm	CC-LBG06559a0.1P	100	5 rolls
297 x 210 mm (DIN A4)	310 x 220 mm	CC-LBG06560a0.1P	100	5 rolls

Other formats, larger order quantities, alternative pre-prints or unprinted labels available on request.

Other information

QUALITY:

- All processes are handled in strict accordance with our company quality guidelines.
- Our company is ISO 9001. Our label production is certified in line with IATF 16949.
- Our labels and colour ribbon materials are certified annually in line with REACH & RoHS specifications.



QUALITY SEALS & CERTIFICATES:

- Many of our labels and colour ribbon materials are UL-certified
- IMDS entries can be made on request



FORMATS AND TOOLS:

- Over 2000 tools available
- We produce custom formats in line with your specifications

HIGH-TEMPERATURE LABEL COLOURS:

Process Cyan C	Green C	Yellow C	Process Magenta C	872C (Metal)
3005C	354C	109C	Red 032C	Cool Grey 9C
300C	347C	165C	185C	Cool Grey 10C
286C	342C	152C	2347C	425C
288C		469C	187C	White

DURABILITY INDEX:

Shows the durability of colour on the label.



Durable



Very Durable



Extremely Durable

MATERIAL TESTS:

- Our TEST THE BEST kit contains 12 material combinations that can be used to conduct basic material tests for your production process. If required, you can order these kits from us free of charge.
- We can produce sample rolls according to your wishes for a flat rate that we only charge if you place an order.



Printing systems



Reliably print labels
for circuit boards
Squix 4/600M
P/N CA-5977011



Technical data	
Resolution	600 dpi
Label size	4 - 110 mm Label height min. 3 mm
Material width	9 - 114 mm
Label roll size	Max. 205 mm with 1.5" - 3" core Internal or external winder
Transfer film roll size	Diam. 80 mm / core: 1" / ribbon length 450 m max.
Interfaces	RS-232, USB 2.0, Ethernet 10/100
Control panel	4.3" touchscreen, colour LCD
Voltage	100 - 240 VAC, 50/60 Hz, PFC
Accessories	WLAN 802.11b/g/n, Hotspot or infrastructure mode 2.4 GHZ, Cutter, tear-off edge, internal or external rewinder, barcode scanner, antistatic brush;



Mach4/S- 600 dpi
label printer for identifying
circuit boards
from 5 x 5 mm



Technical data	
Resolution	600 dpi
Label size	5 - 105.7 mm Label height min. 5 mm
Material width	9 - 120 mm
Label roll size	Max. 205 mm with 1.5" - 3" core Internal or external winder
Transfer film roll size	Diam. 80 mm / core: 1" / ribbon length 450 m max.
Interfaces	RS-232, USB 2.0, Ethernet 10/100
Control panel	4.3" touchscreen, colour LCD
Voltage	100 - 240 VAC, 50/60 Hz, PFC
Accessories	WLAN 802.11b/g/n, Hotspot or infrastructure mode 2.4 GHZ, Cutter, tear-off edge, ext. rewinder, spare magazine for additional label formats;

Printing systems



eOS2 - 300 dpi
Powerful desktop
printer for various applications



Technical data	
Resolution	300 dpi
Label size	10 - 116 mm Label height min. 5 mm
Material width	25 - 120 mm
Label roll size	max. 152 mm with 1.5" core Internal or external winder
Transfer film roll size	Diam. 72 mm / core: 1" / ribbon length 360 m max.
Interfaces	RS-232, USB 2.0, Ethernet 10/100
Control panel	4.3" touchscreen, colour LCD
Voltage	100 - 240 VAC, 50/60 Hz, PFC
Accessories	WLAN 802.11b/g/n, Hotspot or infrastructure mode 2.4 GHZ, Cutter, tear-off edge, ext. rewinder, ext. control panel, ext. label unwinder;

The Alternative

GoDEX

Technical data	
Resolution	600 dpi
Label size	4 - 105.6 mm Label height min. 4 mm
Material width	25 - 118 mm 11 mm with SMT modification
Label roll size	Max. 203 mm with 1.5" - 3" core Internal or external winder
Transfer film roll size	Diam. 80 mm / core: 1" / ribbon length 450 m max.
Interfaces	RS-232, USB 2.0, Ethernet 10/100
Control panel	4.3" touchscreen, colour LCD
Voltage	100 - 240 VAC, 50/60 Hz, PFC
Accessories	WLAN 802.11b/g/n, Bluetooth, Cutter for various applications, tear-off edge, RFID module, ext. rewinder;

GX4600i -SMT

Powerful industrial label printer for
many applications

Optional: SMT modification



Semi-automatic dispensers



It is only cost-effective to use a fully automatic labelling solution if you process large quantities of labels.

For all applications involving smaller quantities, we recommend solutions that streamline the manual application of labels and/or tapes.

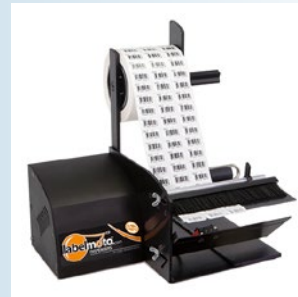
In collaboration with our American partner START international, we provide a wide range of equipment for every application and a large assortment of materials.

Please send us samples of your materials so that we can suggest the right unit for you. We will test your materials and send you a video introducing suitable products.

Labels:



LD3000 ESD



LDX6025

Tapes:



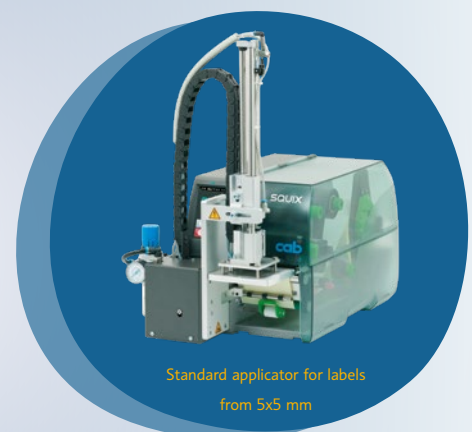
zcm1000-K



TDA080

Special machines for automatic application of labels and other adhesive materials

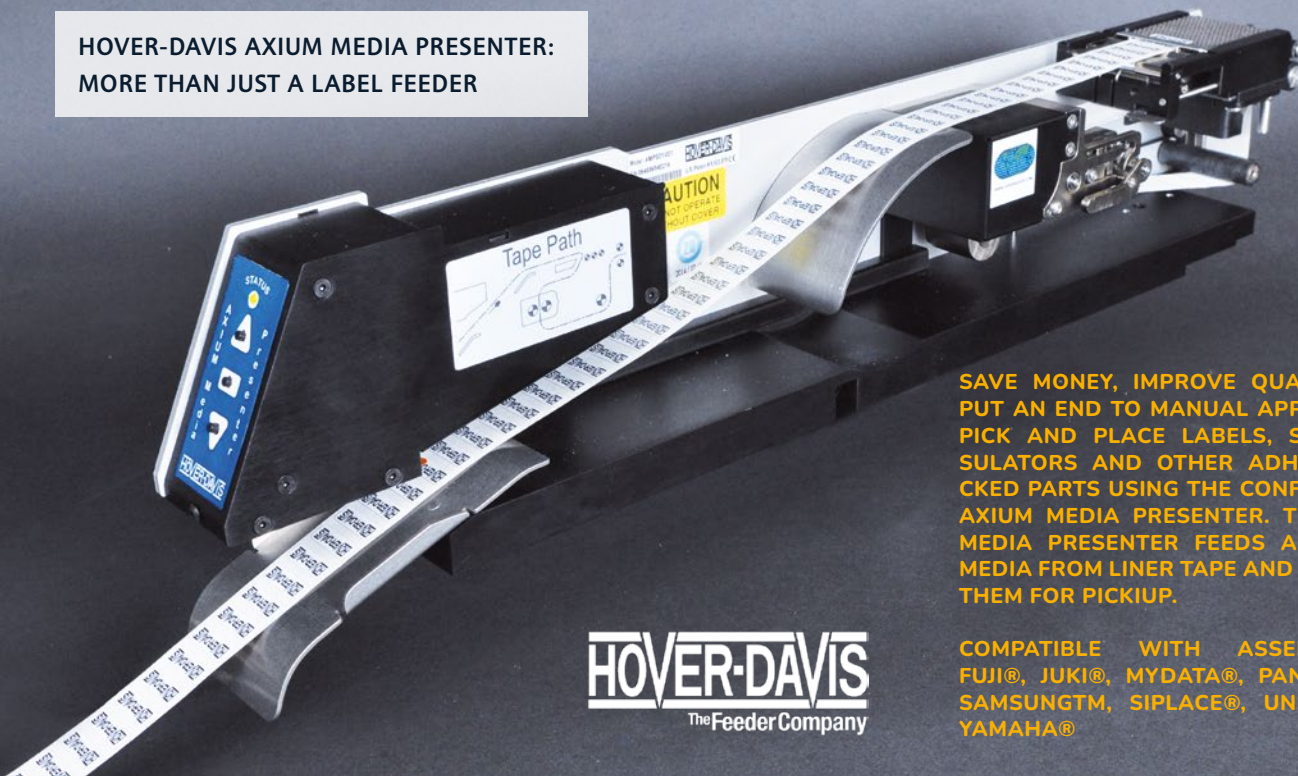
We would be delighted to advise you and help you to plan your customised, fully automatic labelling solution. We can offer you high-quality, reliable solutions in collaboration with our Austrian partner HERMA.



Standard applicator for labels
from 5x5 mm

Automatic label positioning

**HOVER-DAVIS AXIUM MEDIA PRESENTER:
MORE THAN JUST A LABEL FEEDER**



SAVE MONEY, IMPROVE QUALITY AND PUT AN END TO MANUAL APPLICATION. PICK AND PLACE LABELS, SEALS, INSULATORS AND OTHER ADHESIVE-BACKED PARTS USING THE CONFIGURABLE AXIUM MEDIA PRESENTER. THE AXIUM MEDIA PRESENTER FEEDS AND PEELS MEDIA FROM LINER TAPE AND PRESENTS THEM FOR PICKUP.

HOVER-DAVIS
The Feeder Company

COMPATIBLE WITH ASSEMBLÉON®, FUJI®, JUKI®, MYDATA®, PANASONIC®, SAMSUNG™, SIPLACE®, UNIVERSAL®, YAMAHA®

One for (almost) all

Most applications from 3 x 3 to 42 x 35 mm (width x length) can be presented using a generic media platform and picked up using standard nozzles. Special modules for parts smaller than 3mm and wider than 42mm and a platform for larger applications up to 58 x 50mm (width x length) are also available.

Plug-and-play at different speeds.

Adjustable speeds for optimum performance. Plug-and-play models available for most automation cells.

Investment security

The LMG module is compatible with AXIUM media presenters.

Easy to operate

Easy-to-use push-button controls. Modular design makes maintenance easy for the user.

Warranty: 2 years

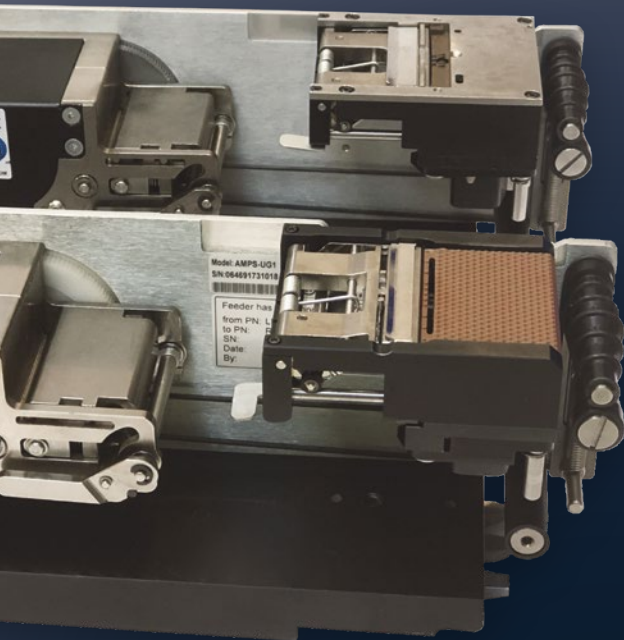
HOVER-DAVIS AXIUM FEEDER SPECIFICATIONS

Specifications	Models for 3-42 mm liner tape		Models for 14-58 mm liner tape	
	Minimum	Maximum	Minimum	Maximum
Media size	3x3 mm* (WxL)	42x50 mm (WxL)	3x3 mm* (WxL)	58x50 mm (WxL)
Media thickness (liner+label)	0.1 mm	0.4 mm	0.1 mm	0.4 mm
Liner width	3 mm	42 mm	14 mm	58 mm
Liner thickness	0.05 mm	0.08 mm**	0.05 mm	0.08 mm**
Feed speed	30 mm/sec	95 mm/Sec	30 mm/sec	95 mm/Sec

* User-defined configurations for media <3 mm side length on request.

** AdoptSMT tests a media sample for liners thicker than >0.08 mm.

Hover-Davis Axium Ramp



TURN YOUR LP FEEDER FOR A FIXED LABEL FORMAT INTO A FLEXIBLE AXIUM MEDIA PRESENTER FOR A RANGE OF LABEL FORMATS.



BACK ILLUSTRATION: LP FEEDER WITH LMG LABEL MODULE FOR A SINGLE LABEL FORMAT

FRONT ILLUSTRATION: LP FEEDER UPGRADED TO A RAMP AXIUM MEDIA PRESENTER WITH FLEXIBLE GMP MODULE FOR A RANGE OF LABEL FORMATS

The same as AXIUM AMP for less
With all features of AXIUM media presenters.

Various conversion options

- Convert your LP feeder to AXIUM RAMP
- New RAMP and return credit for your LP feeder
- New RAMP instead of AXIUM AMP to save money (if available)

Investment security

The LMG module is compatible with AXIUM media presenters.

Easy to operate

Easy-to-use push-button controls. Modular design makes maintenance easy for the user.

Warranty

1 year for all types of conversion

RECOMMENDED LABEL MEDIA

Property	Recommended		Not recommended	
Label size		Min 3x3mm, max 42x50 mm (wide: 58x50 mm), w x l		Less than 3x3 mm, more than 42x50 mm (wide: 58x50 mm)
Label format		Rectangle, square, round		Irregular Shapes (with and without cutouts), but talk to us.
Die cut		No lift marks		Prominent lift marks
Label opacity		Opaque to semi-transparent		Transparent media
Pitch		Minimum 1 mm required		Less than 1 mm
Single column		Single column is ideal		Multi-column
Label orientation		Crosswise		Lengthwise
Cover tape		None		Additional insulating tape not removable by presenter
Reel size		3 inches ID required		Other than 3 inches
Reel winding direction		Overhand, media facing up (out)		Underhand, media facing down (in)

Axium Media presenter for 3-42 mm Liner

Pick and place machine compatible with		Art Nr. Original Neu	Compatible modules
ASSEMBLEON			
ACM, AQ, AX, D9, FCM-II, GEM, GEMX, GEMX-II, GEMXi, GEMXi-II, MG-1, MG-8 (with ITF interface/electrical interface)	AXIUM media presenter Assembleon – ITF interface	HO-AMPA01-001	GMP02 LMG02
	Upgrade LPA01-001 to AXIUM AMPA01-001 media presenter	HO-RAMPA01-001REP	
	AXIUM AMPA01-001 media presenter (converted LP feeder)	HO-RAMPA01-001	
iFLEX, AX501, AX301, iX502, iX302 (9)	AXIUM media presenter Assembleon – ITF interface	HO-AMPA01-001	
	Upgrade LPA01-001 to AXIUM AMPA01-001 media presenter	HO-RAMPA01-001REP	
	AXIUM AMPA01-001 media presenter (converted LP feeder)	HO-RAMPA01-001	
ACM, AQ, D9, FCM-II, GEM, GEMX, GEMX-II, GEMXi, GEMXi-II, MG-1, MG-8 (with pneumatic interface)	AXIUM media presenter Assembleon-GEM series	HO-AMPG01-001 (20)	
	Upgrade LPG01-001 to AXIUM AMPG01-001 media presenter	HO-RAMPG01-001REP	
	AXIUM AMPG01-001 media presenter (converted LP feeder)	HO-RAMPG01-001	
MC	See AMPYS01-001 for Yamaha		
ESSEMTEC			
Cobra, Fox, Paraquada, Puma (17)	AXIUM media presenter SIPLACE	HO-AMPS01-001 (1)	GMP01 GMP02 LMG02
	Upgrade LPS01-001 to AXIUM AMPS01-001 media presenter	HO-RAMPS01-001REP	
	AXIUM AMPS01-001 media presenter (conv. LP feeder) Optional return credit for used but fully functional LPS01-001	HO-RAMPS01-001	
FUJI			
QP2, QP3, XP242, XP243 IP-1,-2,-3 (fixed pickup position in Y axis)	AXIUM media presenter Fuji IP/QP/XP	HO-AMPF01-001	LMG02
	Upgrade LPF01-001 to AXIUM AMPF01-001 media presenter	HO-RAMPF01-001REP	
	AXIUM AMPF01-001 media presenter (conv. LP feeder)	HO-RAMPF01-001	
	AXIUM media presenter Fuji IP/QP/XP with adjustable shoe	HO-AMPF02-001	GMP02, LMG02
NXT, I, II, III, AIM, AIMEX, XPF	AXIUM media presenter Fuji NXT	HO-AMPFN02-001	GMP02 GMP01(7) LMG02
	Upgrade LPFN02-001 to AXIUM AMPFN02-001 media presenter	HO-RAMPFN02-001REP	
	AXIUM AMPFN02-001 media presenter (conv. LP feeder) Optional return credit for used but fully functional LPFN02-001	HO-RAMPFN02-001	
	AXIUM media presenter Fuji NXT with reel holder	HO-AMPFN02-002	
	Upgrade LPFN02-002 to AXIUM AMPFN02-002 media presenter	HO-RAMPFN02-002REP	
	AXIUM AMPFN02-002 media presenter (conv. LP feeder) Optional return credit for used but fully functional LPFN02-002	HO-RAMPFN02-002	
HITACHI / SIGMA			
G5, G5S(18)	AXIUM media presenter SIPLACE with reel holder and rewinder for empty liners	HO-AMPS02-002 (2)	GMP02
	Upgrade LPS02-002 to AXIUM AMPS02-002 media presenter	HO-RAMPS02-002REP	
	AXIUM AMPS02-002 media presenter (conv. LP feeder) Optional return credit for used but fully functional LPS02-002	HO-RAMPS02-002	
JUKI			
CX, FX series, JX100, KE700 / 1000 / 2000 / 3000 (with mechanical interface) (4)	AXIUM media presenter Juki mechanical	HO-AMPJ01-001(4)	GMP02 GMP01(7) LMG02
	Upgrade LPJ01-001 to AXIUM AMPJ01-001 media presenter	HO-RAMPJ01-001REP	
	AXIUM AMPJ01-001 media presenter (conv. LP feeder) Optional return credit for used but fully functional LPJ01-001	HO-RAMPJ01-001	
	AXIUM media presenter Juki mechanical with reel holder	HO-AMPJ02-002(4)	GMP01(7), LMG02
FX series, RX6, RX7, KE3000 (with electrical EF interface) (4)	AXIUM media presenter Juki FX/ electrical	HO-AMPJF01-001	GMP02, GMP01(7) LMG02
KE3000, RS1, RX6, RX7 (with electrical RF interface) (4)	AXIUM media presenter Juki FX/ electrical	HO-AMPJF01-001 (16)	GMP02, GMP01(7) LMG02
MYDATA			
100, 200, 300, TP,DX, LX, SX, MY (6)	AXIUM media presenter SIPLACE with reel holder and rewinder for empty liners	HO-AMPS02-002 (2)	LMG02
	Upgrade LPS02-002 to AXIUM AMPS02-002 media presenter	HO-RAMPS02-002REP	
	AXIUM AMPS02-002 media presenter (conv. LP feeder) Optional return credit for used but fully functional LPS02-002	HO-RAMPS02-002	



Pick-and-place machines compatible with		Art no. of original new	Compatible modules
PANASONIC			
MPAV2, MPAG3, MSF, MCF, BM, IPAC	AXIUM media presenter Panasonic – Panasert	HO-AMPP02-001	GMP02 LMG02
	Upgrade LPP02-001 to AXIUM AMPP02-001 media presenter	HO-RAMPP02-001REP	
	AXIUM AMPP02-001 media presenter (conv. LP feeder)	HO-RAMPP02-001	
AM, CM, DT401, NPM (5)	AXIUM media presenter Panasonic CM/ NPM	HO-AMPPC02-001 (5)	GMP02 (5) GMP01 (5) LMG02
	Upgrade LPPC01-001 to AXIUM AMPPC01-001 media presenter	HO-RAMPPC02-001REP	
	AXIUM AAMPPC02-001 media presenter (converted LP feeder) Optional return credit for used but fully functional LPPC01-001	HO-RAMPPC02-001	
	AXIUM media presenter Panasonic CM/NPM – with reel holder	HO-AMPPC02-002 (5)	
SAMSUNG			
CP20, CP40, CP50, CP55, CP63, CP45, CP45 NEO	AXIUM media presenter Samsung	HO-AMPSG01-001	GMP01 (7) GMP02 LMG02
	Upgrade LPSG01-001 to AXIUM AMPSG01-001 media presenter	HO-RAMPSG01-001REP	
	AXIUM AMPSG01-001 media presenter (conv. LP feeder)	HO-RAMPSG01-001	
SM320, SM471, SM481, SM482 (19)	AXIUM media presenter SIPLACE with reel holder and rewinder for empty liners	HO-AMPS02-002 (2)	GMP01 (7) GMP02 LMG02
	Upgrade LPS02-002 to AXIUM AMPS02-002 media presenter	HO-RAMPS02-002REP	
	AXIUM AMPS02-002 media presenter (conv. LP feeder) Optional return credit for used but fully functional LPS02-002	HO-RAMPS02-002	
SIPLACE			
SIPLACE C/F/S/HF/HS/D X,SX, TX series with adapter (3)(10) E series with adapter (8)	AXIUM media presenter SIPLACE	HO-AMPS01-001 (1)	GMP02 GMP01 (7)(15) LMG02
	Upgrade LPS01-001 to AXIUM AMPS01-001 media presenter	HO-RAMPS01-001REP	
	AXIUM AMPS01-001 media presenter (conv. LP feeder) Optional return credit for used but fully functional LPS01-001	HO-RAMPS01-001	
	AXIUM media presenter SIPLACE with rewinder for empty liners	HO-AMPS02-001 (2) (standard)	
	Upgrade LPS02-001 to AXIUM AMPS02-001 media presenter	HO-RAMPS02-001REP	
	AXIUM AMPS02-001 media presenter (conv. LP feeder) Optional return credit for used but fully functional LPS02-001	HO-RAMPS02-001	
	AXIUM media presenter SIPLACE with reel holder	HO-AMPS01-002 (1)	
	Upgrade LPS01-002 to AXIUM AMPS01-002 media presenter	HO-RAMPS01-002REP	
	AXIUM AMPS01-002 media presenter (conv. LP feeder) Optional return credit for used but fully functional LPS01-002	HO-RAMPS01-002	
	AXIUM media presenter SIPLACE with reel holder and rewinder for empty liners	HO-AMPS02-002 (2)	
	Upgrade LPS02-002 to AXIUM AMPS02-002 media presenter	HO-RAMPS02-002REP	
	AXIUM AMPS02-002 media presenter (conv. LP feeder) Optional return credit for used but fully functional LPS02-002	HO-RAMPS02-002	
UNIVERSAL (11)			
Advantis(12), Fuzion (12), Genesis (12), GSM, Polaris	AXIUM Universal media presenter – 24 V	HO-AMPU01-001	GMP02 GMP01 LMG02
	Upgrade LPU01-001 to AXIUM AMPU01-001 media presenter	HO- RAMPU01-001REP	
	AXIUM AMPU01-001 media presenter (conv. LP feeder)	HO-RAMPU01-001	
	AXIUM Universal media presenter – 42 V (compatible with Lightning Head)	HO-AMPU03-001	
	Upgrade LPU02-001 to AXIUM AMPU02-001 media presenter	HO-RAMPU02-001REP	
	AXIUM AMPU02-001 media presenter (conv. LP feeder)	HO-RAMPU02-001	
YAMAHA / iPULSE			
YV100, XG100, YG100, MG, YG, XG	AXIUM media presenter Yamaha	HO-AMPY01-001 (20)	GMP02 GMP01 (7) LMG02
	Upgrade LPY01-001 to AXIUM AMPY01-001 media presenter	HO-RAMPY01-001REP	
	AXIUM AMPY01-001 media presenter (conv. LP feeder)	HO-RAMPY01-001	
YS12, YS12f, YS24X, YS88, YS100, YSM-20, YSM-40,	AXIUM media presenter Yamaha YS Serie	HO-AMPYS01-001 (13)	GMP02, GMP01 (7) LMG02
M10, M20, S10, S20 (14)	AXIUM media presenter Yamaha YS Serie	HO-AMPYS01-001 (13)	GMP02, GMP01(7) LMG02

Axium Media presenter for 3-42 mm Liner

Generic Media Plattform (Modul) Standard width for 3 – 42 mm Liner	
Generic Media Plattform, adjustable module for AXIUM Presenter, supports 3 - 35mm label length (Standard)	HO-GMP02-001
Generic Media Plattform, adjustable module for AXIUM Presenter, supports 3 - 50mm label length	HO-GMP01-001
Custom Label Module – for special applications, custom module - requires application review	HO-LMG02

(1) Advances liner scrap tape from the feeder into tape cutter, used only with paper liner, not suitable for plastic sheet liner. (2) Incl. rewinder for empty liners. (3) SIPLACE X-Series machines require Adapter for Feeder Modules #00141305 and Label Feeder Adapter Plate #00141310, additional 0646C-0234 recommended. (4) Juki machines with mechanical Interface require a separate Hover-Davis power supply LPJ01-001-PS. For machines with electrical Interface is JUKI Software EVF68 required. (5) CM/NPM machines require a Panasonic Label Feeder Adapter #N610002768AA and a corresponding Software-Plugin. GMP01 for 24 - 44mm labels, GMP02 for 3 - 14mm labels. (6) Mydata machines require Generic Feeder Interface L-014-1483 & Siemens Adapter Platte L-009-0594 supplied by MyData, and HD power supply SSF01-PS. (7) Application Dependent - consult AdoptSMT for GMP01/GMP11 compatibility. (8) SIPLACE E-Series machines require a Feeder-Adapter #00288901 and a Label Feeder Adapter Platte #00141310, additional 0646C-0234 recommended. (9) Requires special software from Asmleoon. (10) With low CPP-Heads AdoptSMT needs to convert the module to „Low Sense Height“. (11) Requires information if 24VAC (6 pogo pads) or 42VDC (7 pogo pads) is used. (12) Requires special software from Universal and AMPU03 when used with Lightning Head (label size then limited to 30x30mm). (13) Includes Cable Adapter 0778A-0102 for 3 Pin Power connections. (14) Requires special software from Yamaha. (15) AMPS with GMP01 Modul compatible with SIPLACE F machines if the head is on the outside of the beam. (16) Requires 2 pcs. RF-AT JUKI Adapter. (17) Requires AMPS01-001(#PC-LFPRI) Feeder, GMP01, (#PC-LFPRI-LM1) or GMP02 (#PC-LFPRI-LM) Module and Adapter (#PC-LF-PRI-B) from Essemtec. (18) Requires Feeder Adapter G5S series (#S02F-MK300-00) from Yamaha. (19) Requires SSF01-PS Supply and AMPS-KIT-SAMSUNG-SM Adapter Kit. (20) Comes with external power supply (0778A-0005).



Axium Media presenter for 14-58 mm Liner

Pick-and-place machines compatible with		Art no. of original new	Compatible modules
ASSEMBLEON			
ACM, AQ, AX, D9, FCM-II, GEM, GEMX, GEMX-II, GEMXi, GEMXi-II, MG-1, MG-8 (with ITF interface/electrical interface)	AXIUM media presenter Assembleon – ITF interface	HO-AMPA11-001	GMP12, LMG12
iFLEX, AX501, AX301, iX502, iX302 (9)	AXIUM media presenter Assembleon – ITF interface	HO-AMPA11-001	
ACM, AQ, D9, FCM-II, GEM, GEMX, GEMX-II, GEMXi, GEMXi-II, MG-1, MG-8 (with pneumatic interface)	AXIUM media presenter Assembleon GEM series	HO-AMPG11-001 (20)	
MC	See AMPYS11-001 for Yamaha		
ESSEMTEC			
Cobra, Fox, Paraquada, Puma (17)	AXIUM media presenter SIPLACE	HO-AMPS11-001 (1)	GMP11, GMP12, LMG12
FUJI			
QP2, QP3, XP242, XP243 IP-1,-2,-3 (fixed pickup position in Y axis)	AXIUM media presenter Fuji IP/QP/XP	HO-AMPF11-001	LMG12
	AXIUM media presenter Fuji IP/QP/XP with adjustable shoe	HO-AMPF12-001	GMP12, LMG12
NXT, I, II, III, AIM, AIMEX, XPF	AXIUM media presenter Fuji NXT	HO-AMPFN12-001	GMP12, GMP11 (7), LMG12
	AXIUM media presenter Fuji NXT with reel holder	HO-AMPFN12-002	
HITACHI / SIGMA			
G5, G5S (18)	AXIUM media presenter SIPLACE with reel holder and rewinder for empty liners	HO-AMPS12-002 (2)	GMP12
JUKI			
CX, Fx series, JX100, KE700 / 1000 / 2000 / 3000 (with mechanical interface) (4)	AXIUM media presenter Juki mechanical	HO-AMPJ11-001 (4)	GMP12, GMP11 (7), LMG12
	XIUM media presenter Juki mechanical with reel holder	HO-AMPJ12-002 (4)	GMP11 (7), LMG12
FX series, RX6, RX7, KE3000 (with electrical EF interface) (4)	AXIUM media presenter Juki FX/ electrical	HO-AMPJF11-001	GMP12, GMP11 (7), LMG12
KE3000, RS1, RX6, RX7 (with electrical RF interface) (4)	AXIUM media presenter Juki FX/ electrical	HO-AMPJF11-001 (16)	GMP12, GMP11 (7), LMG12

Axium Media presenter for 14-58 mm Liner

Pick-and-place machines compatible with		Art no. of original new	Compatible modules
MYDATA			
100, 200, 300, TP,DX, LX, SX, MY (6)	AXIUM media presenter SIPLACE with reel holder and rewinder for empty liners	HO-AMPS12-002 (2)	LMG12
PANASONIC			
MPAV2, MPAG3, MSF, MCF, BM, IPAC	AXIUM media presenter Panasonic – Panasert	HO-AMPP12-001	GMP12, LMG12
AM, CM, DT401, NPM (5)	AXIUM media presenter Panasonic CM/ NPM	HO-AMPPC12-001 (5)	GMP12(5),GMP11 (5), LMG12
	AXIUM media presenter Panasonic CM/NPM – with reel holder	HO-AMPPC12-002 (5)	
SAMSUNG			
CP20, CP40, CP50, CP55, CP63, CP45, CP45 NEO	AXIUM media presenter Samsung	HO-AMPSG11-001	GMP11 (7), GMP12, LMG12
SM320, SM471, SM481, SM482 (19)	AXIUM media presenter SIPLACE with reel holder and rewinder for empty liners	HO-AMPS12-002 (2)	GMP11 (7), GMP12, LMG12
SIPLACE			
SIPLACE C/F/S/HF/HS/D X,SX, TX series with adapter (3)(10) E series with adapter (8)	AXIUM media presenter SIPLACE	HO-AMPS11-001 (1)	GMP12, GMP11 (7)(15) LMG12
	AXIUM media presenter SIPLACE with rewinder for empty liners	HO-AMPS12-001 (2) (standard)	
	AXIUM media presenter SIPLACE with reel holder	HO-AMPS11-002 (1)	
	AXIUM media presenter SIPLACE with reel holder and rewinder for empty liners	HO-AMPS12-002 (2)	
UNIVERSAL (11)			
Advantis (12), Fuzion (12), Genesis (12), GSM, Polaris	AXIUM Universal media presenter – 24 V	HO-AMPU11-001	GMP12, GMP11 LMG12
	AXIUM Universal media presenter – 42 V (compatible with Lightning Head)	HO-AMPU13-001	
YAMAHA / iPULSE			
YV100, XG100, YG100, MG, YG, XG	AXIUM media presenter Yamaha	HO-AMPY11-001 (20)	GMP12, GMP11 (7) LMG12
YS12, YS12f, YS24X, YS88, YS100, YSM-20, YSM-40,	AXIUM media presenter Yamaha YS series	HO-AMPYS11-001 (13)	GMP12,GMP11 (7) LMG12
M10, M20, S10, S20 (14)	AXIUM media presenter Yamaha YS series	HO-AMPYS11-001 (13)	GMP12,GMP11 (7) LMG12

Generic Media Plattform (Modul) for 14 - 58 mm Liner	
Generic Media Plattform, adjustable module for AXIUM Presenter, supports 3 - 35mm label length	HO-GMP12-001
Generic Media Plattform, adjustable module for AXIUM Presenter, supports 3 - 50mm label length	HO-GMP11-001
Custom Label Module – for special applications, custom module - requires application review	HO-LMG12

(1) Advances liner scrap tape from the feeder into tape cutter, used only with paper liner, not suitable for plastic sheet liner. (2) Incl. rewinder for empty liners. (3) SIPLACE X-Series machines require Adapter for Feeder Modules #00141305 and Label Feeder Adapter Plate #00141310, additional 0646C-0234 recommended. (4) Juki machines with mechanical Interface require a separate Hover-Davis power supply LPJ01-001-PS. For machines with electrical Interface is JUKI Software EVF68 required. (5) CM/NPM machines require a Panasonic Labe Feeder Adapter #N610002768AA and a corresponding Software-PlugIn. GMP01 for 24 - 44mm labels, GMP02 for 3 - 14mm labels. (6) Mydata machines require Generic Feeder Interface L-014-1483 & Siemens Adapter Platte L-009-0594 supplied by MyData, and HD power supply SSF01-PS. (7) Application Dependent - consult AdoptSMT for GMP01/GMP11 compatibility. (8) SIPLACE E-Series machines require a Feeder-Adapter #00288901 and a Label Feeder Adapter Platte #00141310, additional 0646C-0234 recommended. (9) Requires special software from Assembléon. (10) With low CPP-Heads AdoptSMT needs to convert the module to „Low Sense Height“. (11) Requires information if 24VAC (6 pogo pads) or 42VDC (7 pogo pads) is used. (12) Requires special software from Universal and AMPU03 when used with Lightning Head (label size then limited to 30x30mm). (13) Includes Cable Adapter 0778A-0102 for 3 Pin Power connections. (14) Requires special software from Yamaha. (15) AMPS with GMP01 Modul compatible with SIPLACE F machines if the head is on the outside of the beam. (16) Requires 2 pcs. RF-AT JUKI Adapter. (17) Requires AMPS01-001(#PC-LFPRI) Feeder, GMP01, (#PC-LFPRI-LM1) or GMP02 (#PC-LFPRI-LM) Module and Adapter (#PC-LF-PRI-B) from Essentec. (18) Requires Feeder Adapter G5S series (#S02F-MK300-00) from Yamaha. (19) Requires SSF01-PS Supply and AMPS-KIT-SAMSUNG-SM Adapter Kit. (20) Comes with external power supply (0778A-0005).

Software

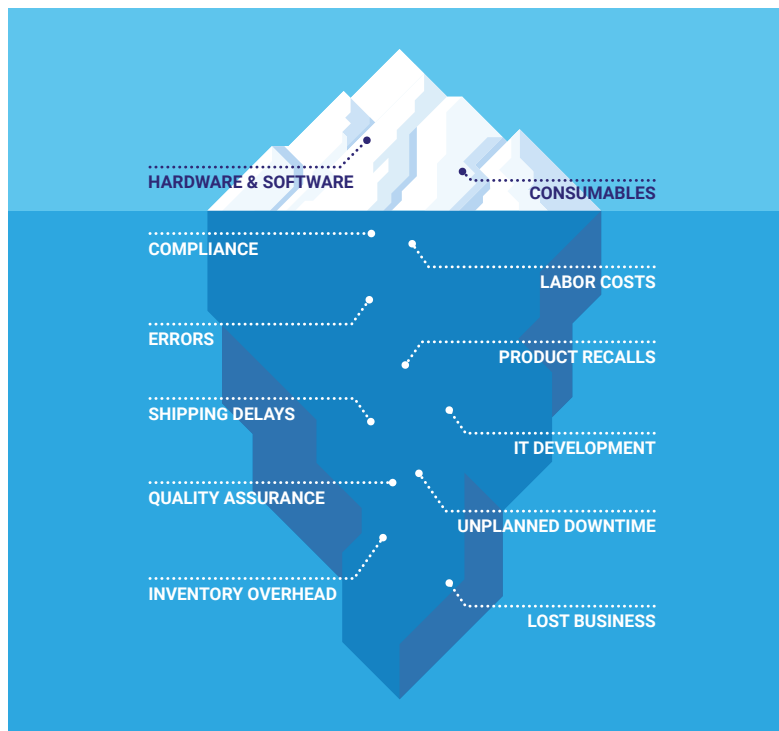


Software/NiceLabel is a leading global provider of labelling and artwork management solutions that help companies of all sizes increase the quality, speed and efficiency of their labelling processes while reducing costs.

The Software NiceLabel product line contains powerful labelling solutions that manage the entire labelling process. Whether you have 5 or 500 printers and whether you want to work on-site or in the cloud, we have a labelling solution that is perfect for your business needs:

- Software NiceLabel labelling platform
- Software NiceLabel desktop solution (Designer & PowerForms)

Fulfill all your labeling requirements with NiceLabel and eliminate hidden labeling costs



We'll show you how!

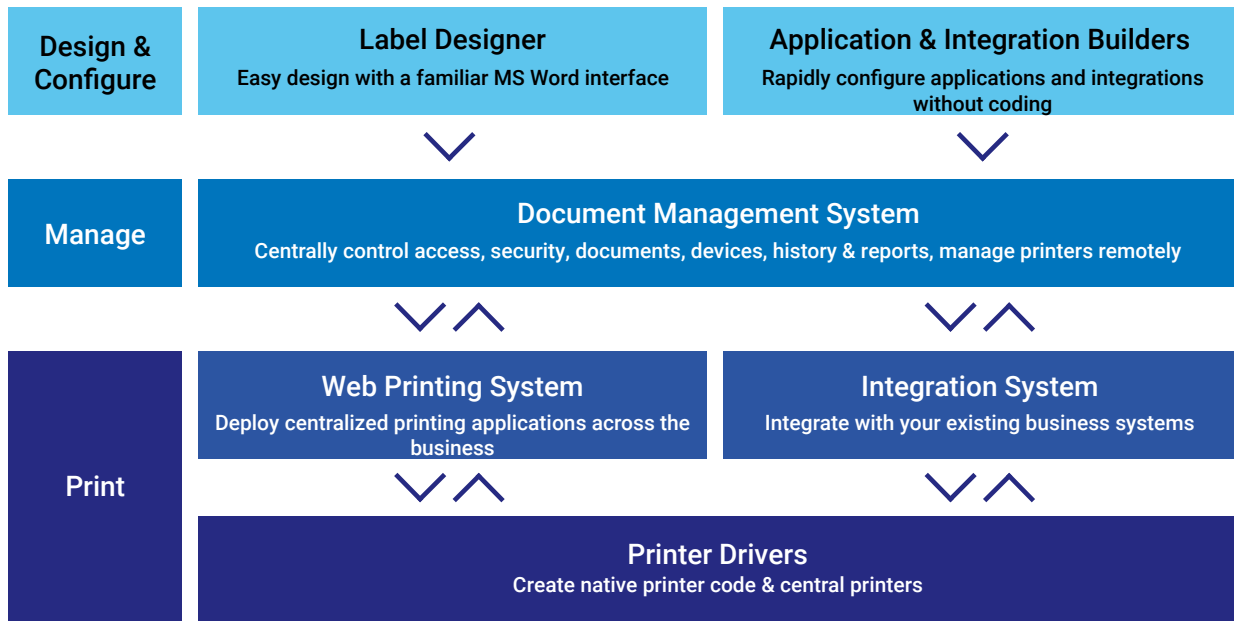


Interested?

Visit us on LinkedIn

and stay up to date with our product updates and news.

What is the Software NiceLabel Labeling Platform?



Software NiceLabel Cloud's Powerful Benefits



Be up and running in minutes with minimal IT resources



Simply design labels in an intuitive environment



Configure labeling applications that guide your users



Integrate labeling with your business systems



Securely store and manage labels and data in the cloud



Easily scale printing across your business



Pay on subscription and lower your TCO



Benefit from a global partner network

AdoptSMT Europe GmbH

Software
NiceLabel

Software
CLOUD
Award 2023

- Free demo version
- Consultation
- Integration into existing business systems
- Installation
- Training
- And more

The CLOUD Award recognizes partners who have delivered innovative solutions with NiceLabel Cloud

LOCATIONS

We are here for you internationally

AdoptSMT Europe HQ Austria

Untersbergstrasse 1
5082 - Grödig near Salzburg
T: +43 6246 724 400
info@adoptsmt.com

Austria | Germany | Poland | United Kingdom | France | Swiss

adoptsmt.com